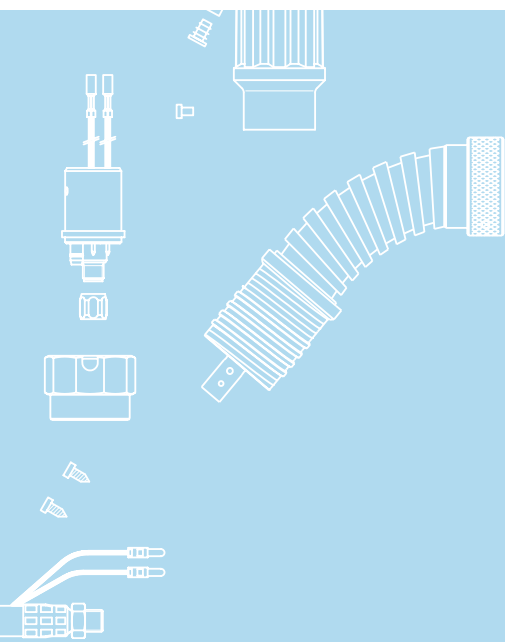




## *Classic* TBi 241 E3



Water cooled

Same consumables as TBi 241

Slip-on fume shroud

### Technical data

#### MIG/MAG semi-automatic fume extraction welding torch TBi 241 E3

Rating at 100% duty cycle  
(10 min. cycle)

- Mixed gas: 270 A  
- CO<sub>2</sub>: 300 A

Cooling method water cooling

Wire diameter 0.8 - 1.2 mm

Gas flow 14 l/min

Technical specification according to IEC 60974-7

Weight with 1.5m cable 1.60 kg

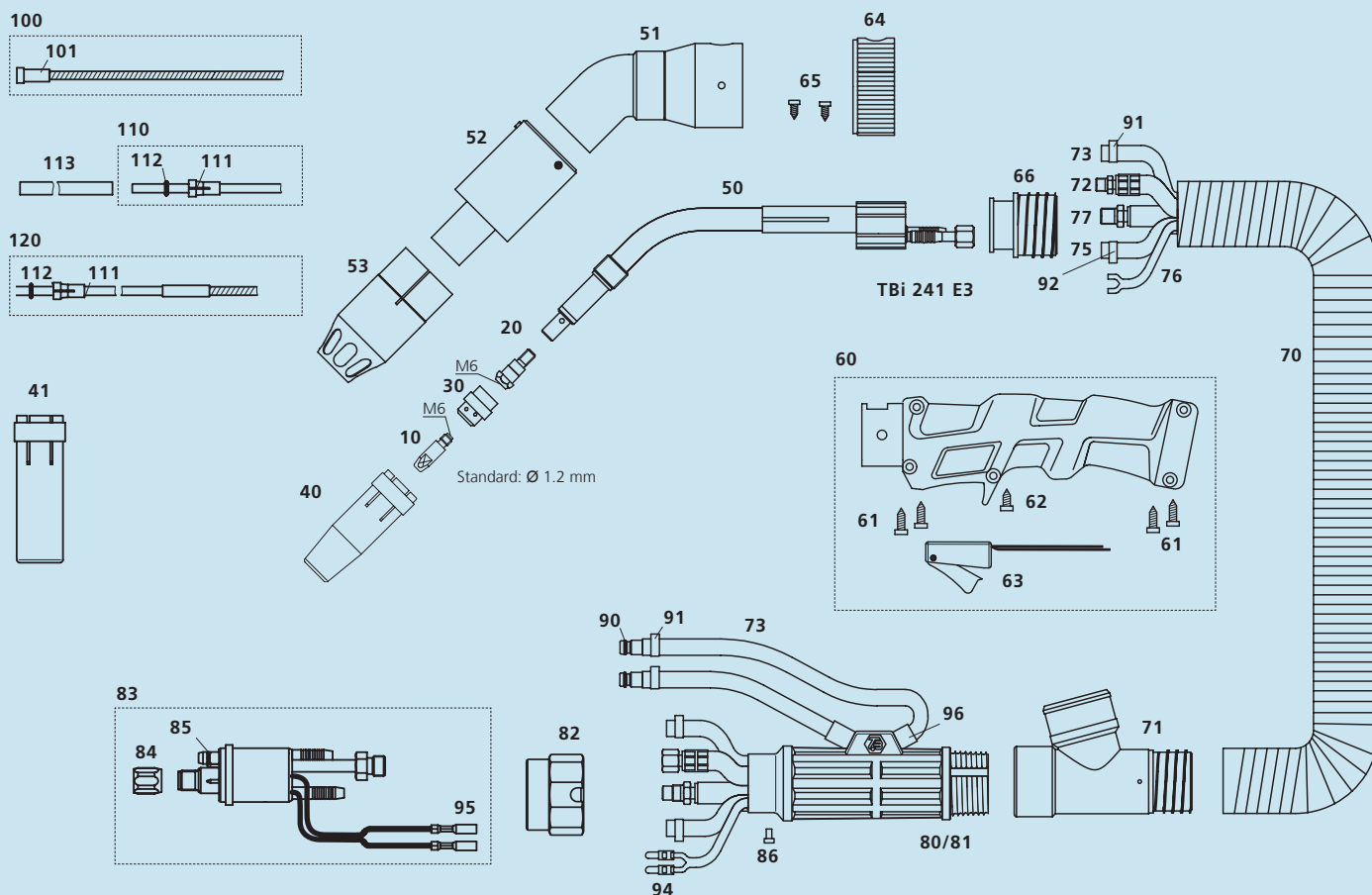
Connection Euro-Central connector  
other connectors are available  
upon request.

Torch rating will be reduced when using pulsed-arc power sources.  
Custom lengths of the cable assembly are available upon request.

### Ordering Information

TBi 241 E3 ESW, 50° bent 223P4X15\_0\*

\* At the blank, please insert 3, 4 or 5 for a torch length of 3, 4 or 5 m.



Pos.	Description	Part. No.	Pos.	Description	Part. No.
<b>Contact tips</b>					
▶ 10	Contact tip M6x28, Ecu	340P_1069*	72	Water-power cable Classic, blue, 2-C	316P1621_0*
10	Contact tip M6x28, CuCrZr	340P_3069*	73	PVC hose, braided, black, 5x1.5 mm	302P020000
10	Contact tip M6x28 Alu, Ecu	341P_1069*	75	PVC-Gas hose, black, 4.5x1.5 mm	302P010000
<b>Tip holders</b>					
▶ 20	Tip holder M6 / L=26 mm	342P006012	76	Control cable x.10m, round, cpl., for Tbi E1/E2/E3	301P2304_1*
<b>Gas diffusers</b>					
▶ 30	Gas diffuser, red	112P002019	77	Wire conduit yellow ,Classic'	356P0401_0*
30	Gas diffuser, black	112P002024	80	Cable support housing (only with pos. 81)	701P102070
30	Gas diffuser, ceramic	112P002021	81	Cable support cover (only with pos. 80)	701P102071
<b>Gas nozzles</b>					
▶ 40	Nozzle conical diam. 12.5 mm	345P012012	82	Adaptor nut	701P001013
41	Nozzle cylindrical diam. 17 mm	345P011012	83	Central adaptor ESW cpl., 2 poles, moveable pins	701P001049
<b>Spare parts</b>					
50	Torch neck Tbi 241 E3	223P001016	84	Sleeve nut M10x1	701P002005
51	Outer tube Tbi 240/241/5G/5W E3	223P001010	85	O-ring 4.0x1.0 mm (gas nipple)	365P100040
52	Nozzle support Tbi 240 E3/241 E3	223P001013	86	Slotted screw M4x6	100P008401
53	Fume shroud Tbi 240/241/5G/5W E3	212P001001	90	Quick connector	701P002064
60	Handle cpl., blue, housed micro switch, Tbi E2/E3	380P220606	91	Hose clamp Ø 9.5 with ring	373P100095
61	Self-cutting screw 3.5x14.0 mm	100P797101	92	Hose clamp Ø 8.7	371P000087
62	Self-cutting screw, short, Tbi E3	100P008411	94	Insulated connector, male, round	375P000004
63	Micro switch, housed, cpl.	600P101046	95	Insulated connector, female, round	375P000003
64	Air regulator large	200P102001	96	Rubber hose 10x2.0 mm	310P102102
65	Fillister head screw, 2.9x6.5 mm	100P797103			
66	Handle fitting for 38 mm fume hose	274P102011			
70	Fume extraction hose D=38 mm	306P384600			
71	T-joint cpl. for 38 mm fume hose	200P101012			
<b>Wire guides</b>					
▶ 100	Liner w/o insulation (x.40 m) for wire 1.0-1.2	322P2045_4*			
100	Liner w/ insulation blue (x.40 m) for wire 0.8-1.0	324P1545_4*			
101	Collet for liners diam. 4.5 mm	330P025045			
110	PTFE-liner blue (x.50 m) for wire 0.8-1.0	326P1540_5*			
110	PTFE-liner red (x.50 m) for wire 1.0-1.2	326P2040_5*			
111	Collet for liners 4.0 mm	331P020040			
112	O-ring 3.50x1.50 mm (for liner)	365P150035			
113	Support tube 5x4.4 mm, L=150 mm	329P544150			
120	PA-Alu wire guide (x.50 m) for wire 1.0-1.2	328P2040_A*			

▶ = Standard equipment

\* At the blank, please insert suitable information for torch length or wire diameter, e.g. 08 for 0.8 mm or 3 for 3 mm.

© 2012 Tbi Industries GmbH. All rights reserved. Subject to change without notice. Warranty only when using original Tbi consumables and spare parts. Excerpts and reprints not permitted. Nr. DOKP113542, 12/2012.

Tbi Industries GmbH  
Ruhberg 14  
D-35463 Fernwald-Steinbach  
P.O. Box 67  
D-35461 Fernwald-Steinbach

Tel. + 49 6404 9171-0  
Fax. + 49 6404 9171-40  
Internet: www.tbi-industries.com  
E-mail: info@tbi-industries.com