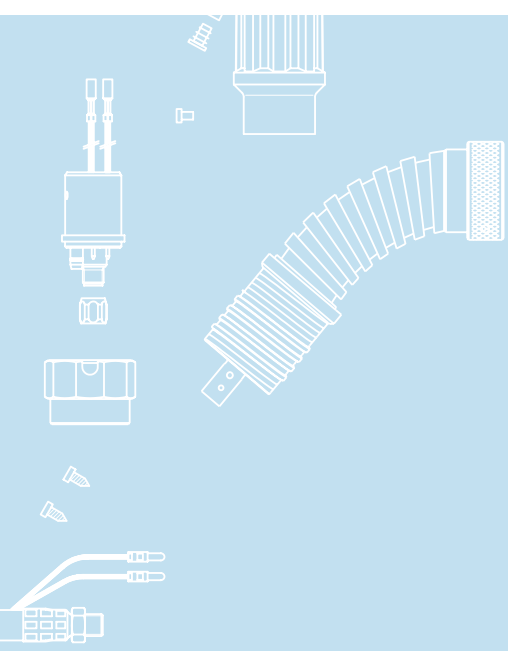




## Classic TBi 240 E3

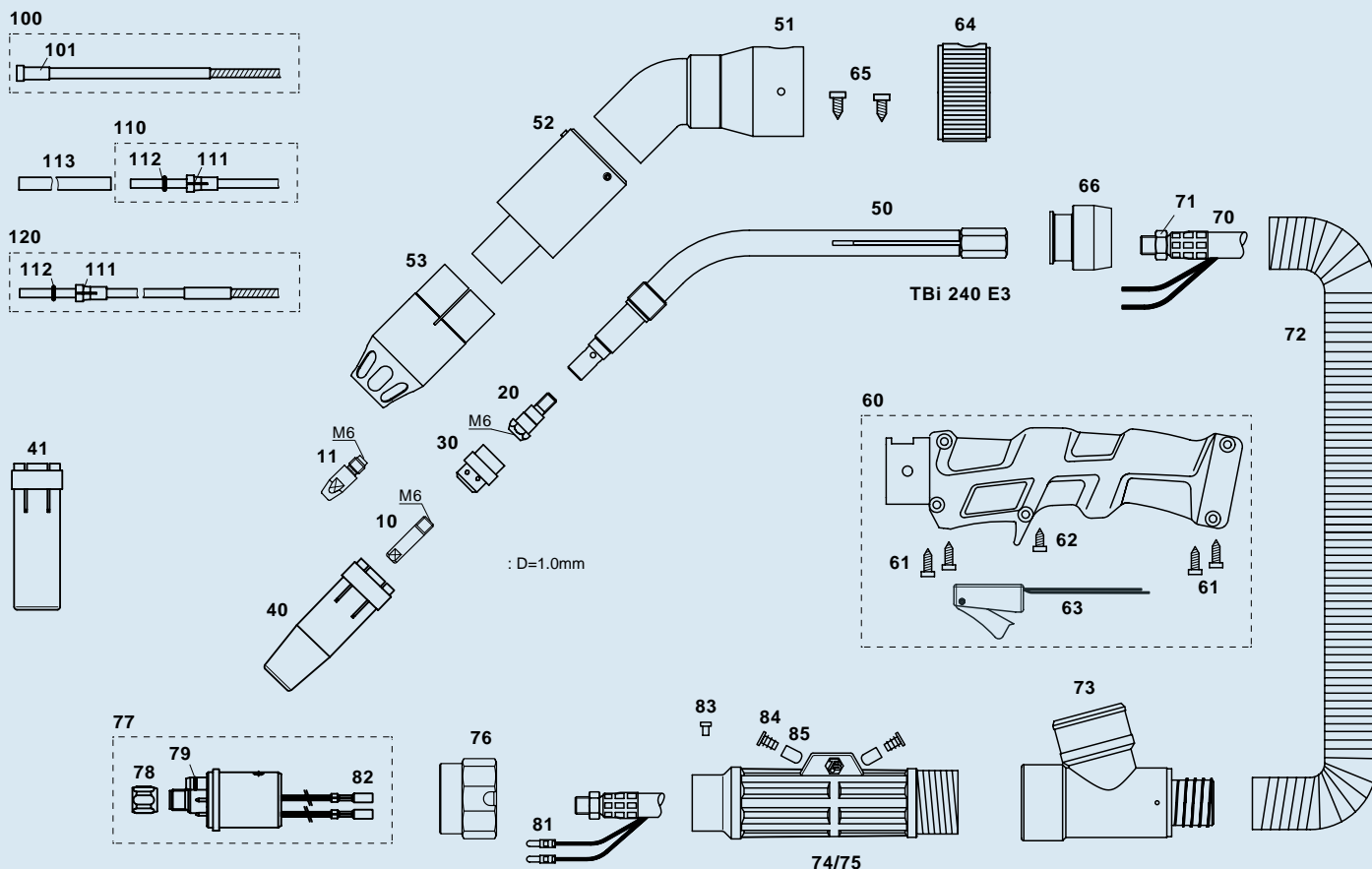


	TBi 240

### MIG/MAG TBi 240 E3

(10 . . )	60%	
-	:	220 A
- CO <sub>2</sub> :	:	250 A
		0.8 - 1.2 mm
		12 /
		IEC 60974-7
	1.5 m	1.40 kr

TBi 240 E3	ESG,	50°	212P3X13_0*
*	3, 4	5	



>	10	<b>M6x25, Ecu</b>	<b>340P_1073*</b>
	10	M6x25, CuCrZr	340P_3073*
	10	M6x25 Alu, Ecu	341P_1073*
	11	M6x28, Ecu	340P_1069*
	11	M6x28, CuCrZr	340P_3069*
	11	M6x28 Alu, Ecu	341P_1069*

>	20	<b>M6 / L=26 mm</b>	<b>342P006012</b>
---	----	---------------------	-------------------

>	30		<b>112P002019</b>
	30		112P002021
	30		112P002022

>	40	<b>., 12.5 mm</b>	<b>345P012012</b>
	41	., 17.0 mm	345P011012

	50	TBi 240 E3	212P001004
	51	TBi 240/241/5G/5W E3	223P001010
	52	TBi 240 E3/241 E3	223P001013
	53	TBi 240/241/5G/5W E3	212P001001
	60	., Tbi E2/E3	380P220606
	61	3.5x14.0 mm	100P797101
	62	., T i E3	100P008411
	63		600P101046
	64		200P102001

	65		100P797103
	66	29 mm	252P102026
	70	25	359P2511_0*
	71	6- M10x1	101P002005
	72	D=29 mm	306P293600
	73	29 mm	200P101013
	74	(.75)	701P102070
	75	(.74)	701P102071
	76		701P001013
	77	ESG,	701P001048
	78	M10x1	701P002005
	79	4.0x1.0 mm ( . )	365P100040
	81		375P000004
	82		375P000003
	83	. M4x6	100P008401
	84		200P102006
	85		395P000004

	100	(x.40 m)	0.8-1.0	324P1545_4*
>	100	<b>(x.40 m)</b>	<b>1.0-1.2</b>	<b>324P2045_4*</b>
	101	4.5 mm		330P025045
	110	., (x.50 m)	0.6-0.9	326P1540_5*
	110	., (x.50 m)	1.0-1.2	326P2040_5*
	111	/	4.0 mm	331P020040
	112	3.50x1.50 mm ( )		365P150035
	113	/	5x4.4 mm, L=150 mm	329P544150
	120	/	Alu (x.50m)	328P2040_A*

> = , 08 0,8 3 3 .

2012 TBI Industries GmbH. All rights reserved. Subject to change without notice. Warranty only when using original T i consumables and spare parts. Excerpts and reprints not permitted. Nr. DOKP113512,12/2012.